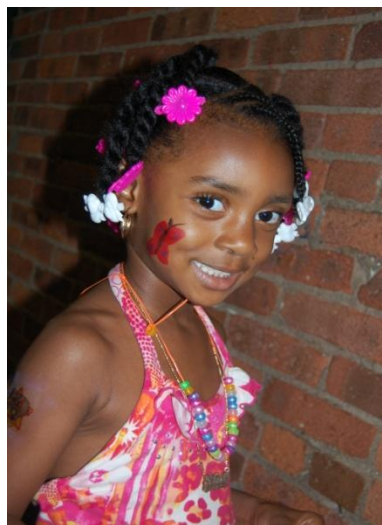


# Kingsbridge Heights Community Center



## EARLY HEAD START ANNUAL REPORT



2012-2013

Kingsbridge Heights Community Center  
3101 Kingsbridge Terrace, Bronx, NY 10463

*Serving Community, Building Relationships*

# Kingsbridge Heights Community Center

## ABOUT OUR CENTER



**Giselle Melendez-Susca**  
*Executive Director*

### OUR MISSION

KHCC's mission is to build on the strengths of residents in our diverse community, enabling them to effect change and improve the quality of their own lives and those of their families and their community. We believe that despite poverty, unemployment, and other challenges our residents have the ability to create a brighter future for themselves.

### OUR HISTORY

The Kingsbridge Heights Community Center was founded in 1974 by a group of passionate community organizers gathered around three neighborhood women: Mary McLoughlin, Patricia Burns, and Janet Athanasidy. Upon hearing in 1972 that the 50th Precinct was moving out of its turn-of-the-century building on Kingsbridge Terrace, the three jumped at the opportunity to realize their vision for a community center.



**Lori Spector**  
*Deputy Director*

The center opened during the spring of 1975 with a Teen Program and a Head Start Program and a budget of \$500,000 to renovate the facility. While work proceeded, new programs were sometimes offered in neighborhood parks, churches, and other locations. As the revitalized precinct building came together, the vision for the organization expanded: it would be modeled after the great New York settlement houses, providing educational and cultural activities for all community residents.

Today, KHCC offers programs and services for all ages and is an active member of United Neighborhood Houses of New York City and United Neighborhood Centers of America. From the adaptive reuse of our historic building to our responsive programs, the Kingsbridge Heights Community Center represents a crucial piece of the fabric of New York City. Under the leadership of Ms. Melendez-Susca, we are poised to help our neighbors in the Bronx meet the challenges of the coming decade.

# Early Head Start

2012-2013



The Early Head Start (EHS) at Kingsbridge Heights Community Center is a program serving families and children from pregnancy through age three years.

The program is designed to provide early support to families of infants and toddlers, support which will enhance the child's development through healthy beginnings and the continuity of responsive and caring relationships.

The goal of EHS is to foster the intellectual, social and emotional growth of both parent and child. Parents and children can participate in the three program options offered, Combination Program Option, Family Child Care Option or the Pregnancy Option.

## AUDIT RESULTS

**March 2011:** Kingsbridge Heights Community Center is in full compliance with the applicable Head Start Program Standards, laws, regulations, and policy requirements during the Tri-annual Federal Monitoring Review.

**November 2013:** Kingsbridge Heights Community Center completed its annual audit by BDO Seidman, LLC for fiscal year ending June 30, 2013, which indicated compliance with each of its major federal programs.

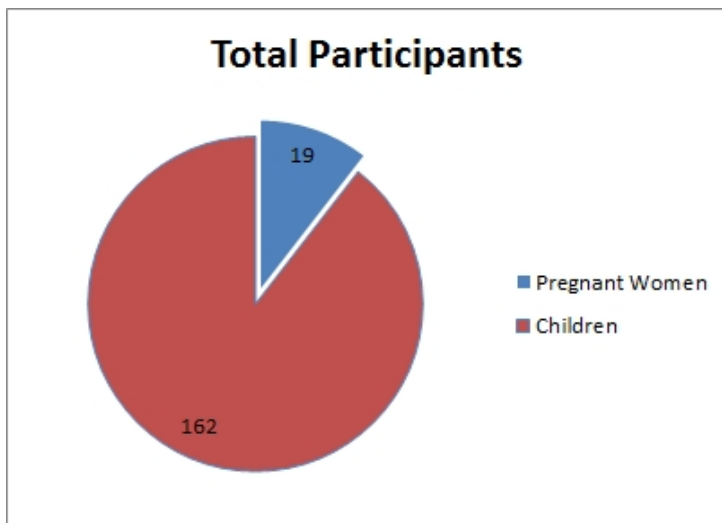
## BUDGET REPORTS

All EHS funding is provided by the Department of Health and Human Services within the Administration for Children and Families. The EHS grant by the Department of Human Services is reflected by the following:

Budget for EHS include:

EHS funds total **\$1,883,588**

## PERFORMANCE INDICATORS



1, % Total number of participants

1 ( ) Number of Families served by the program

1' 4 Average number of children enrolled Each Month

- - " % of average enrollment compared to funded enrollment

- - "( % of children with identified continuous medical care

- \* " % are up to date on immunizations or have all possible at this time  
 ..... as determined by physician

- , " , % of children with continuous professional dental care

% '\* % are children with disabilities served

2%\$ % of fathers participated in program activities

93'%% of enrolled families received family services  
 ..... (including health and parenting education and support on child development)

## CHARACTERISTICS OF ENROLLED FAMILIES

- & % of families are low income  
families living in the Bronx

)' % of families are two-parent families

+& % of families are working

% % of families are in school

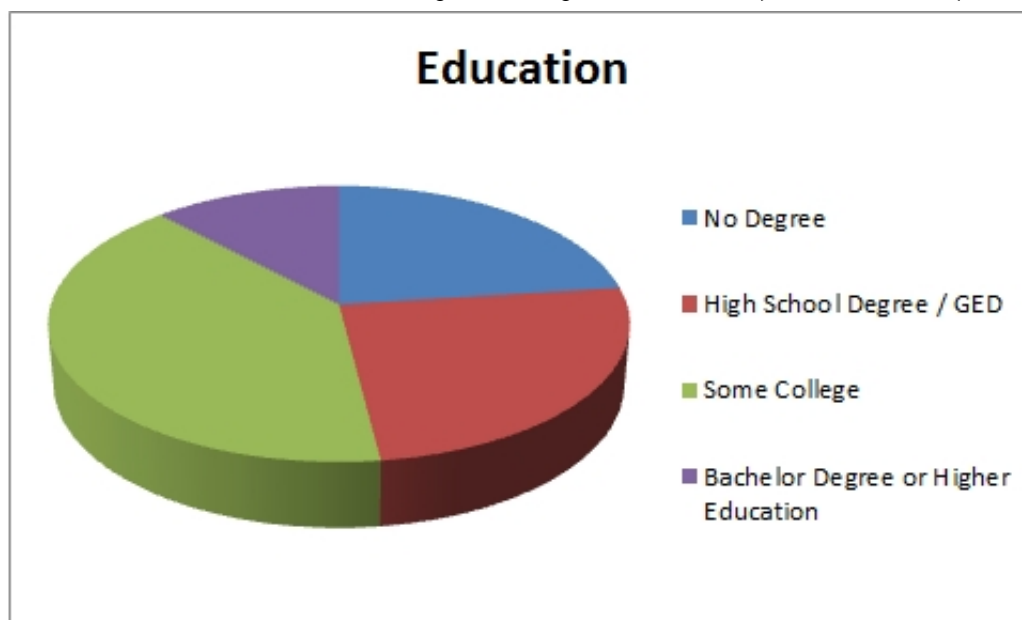
++ % of families participate in WIC

**20** families experienced homelessness  
during the program year

&) % of families have a  
high school degree/GED,

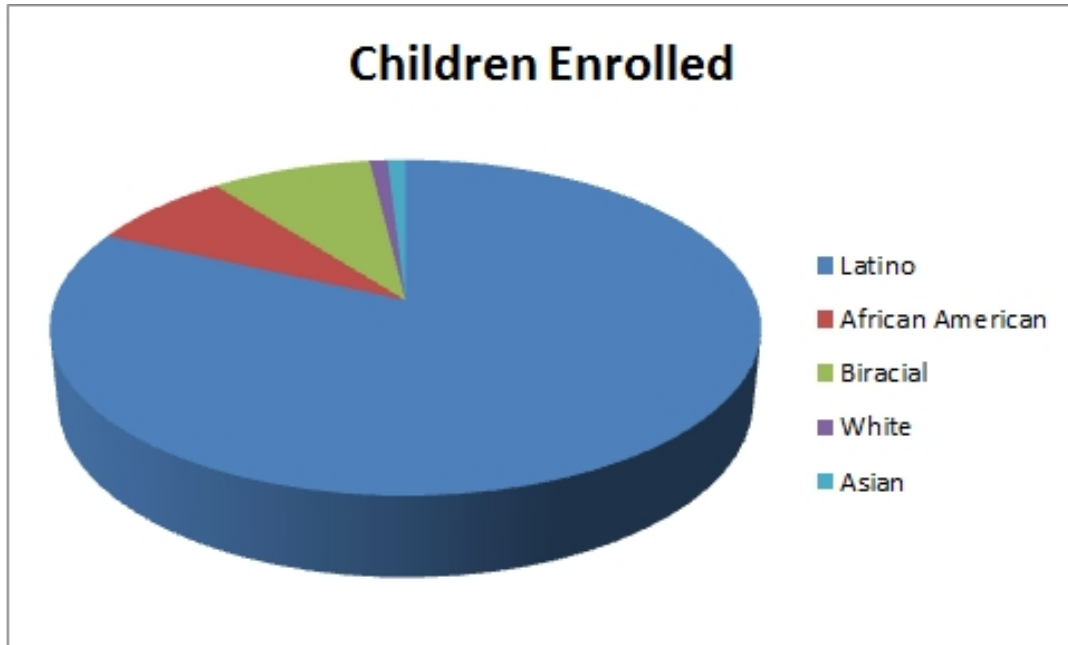
( \$ % of families have some college

**12%** of families have a Bachelor degree or higher education (see chart below)





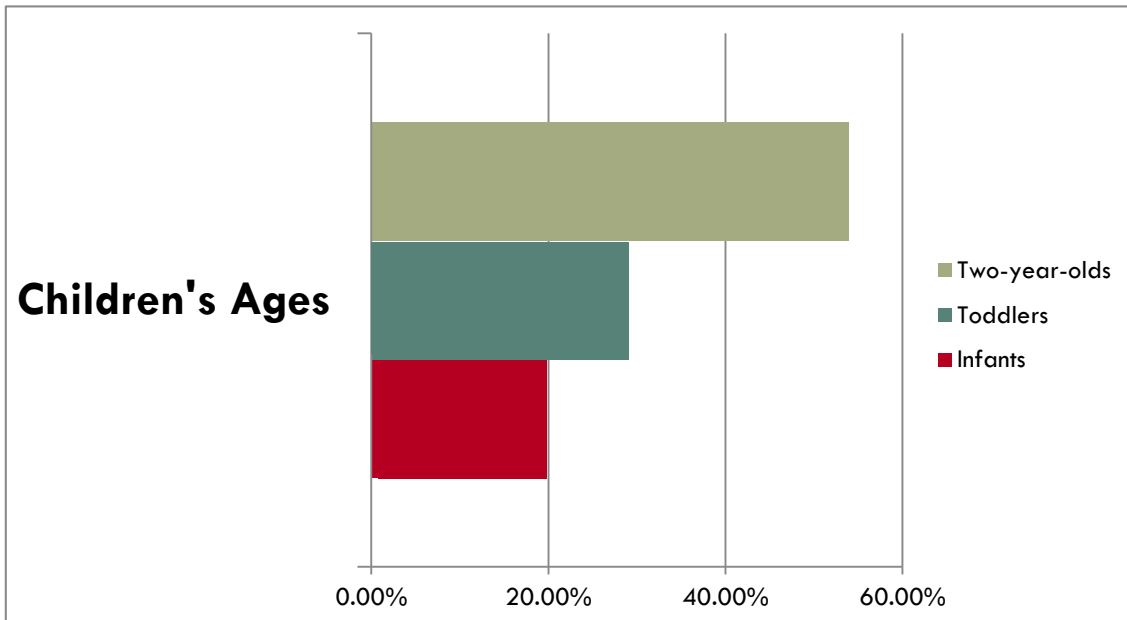
## CHARACTERISTICS OF ENROLLED FAMILIES (CONT'D)



Children: 75% Latino, 10% African American, 10% Biracial, 3% White, 2% Asian



## CHARACTERISTICS OF ENROLLED FAMILIES (CONT'D)



Children enrolled: 20% infants, 28% toddlers and 52% two-year-olds



### **School Readiness Child Assessment System**

Kingsbridge Heights Community Center uses a variety of data collection tools for assessment of children throughout the year. Children are screened with the Denver Screening tool and then assessed with the Ages and Stages Questionnaire (ASQ), Ages and Stages Questionnaire for Social Emotional Development (ASQ-SE) and the Teaching Strategies Gold Assessment throughout the year.

Kingsbridge Heights Leadership plans for the program and share information in a variety of ways. Key Leadership personnel meet with the Board of Directors, Parent Policy Council, and Staff. We also developed a school readiness committee to support the efforts of school readiness and family engagement throughout the year. As a result of the assessments and observations KHCC developed professional development for teachers and ECW's to support the birth to 3 year olds development and transition to a school setting. The Family Childcare Program implemented the utilization of a combined role of education and family services by creating the Early Childhood Worker position for support and monitoring of family childcare homes. In our combination program we changed the classes to be grouped by age and purchased more materials to promote fine motor development in toddlers.

### **Aggregated Data Scores**

Kingsbridge heights Community Center Early Head Start Program collects and analyzes data from the Teaching Strategies GOLD Assessment in five areas of development in the Fall, Winter and Spring. This year our aggregated data results concluded the following:

<b>School Readiness Goals for Infants and Toddlers</b>	<b>Aggregated Scores</b>
<b>Social &amp; Emotional Development Goals</b>	
0-3 year olds	By the Spring 93% of children were meeting or exceeding the expectations; 7% were below the average.
<b>Approaches Toward Learning Goals for Infants and Toddlers</b>	
0-3 years	By the Spring 100% of children were meeting or exceeding the expectations; none were below the average.
<b>Cognition and General Knowledge</b>	
0-3 years	In the Spring 100% of children were meeting the expectations; none were below the average.
<b>Physical Development</b>	
0-3 year	By the Spring 93% of children were meeting the expectations; 7% were below the average.
<b>Language</b>	
0-3 years	By the Spring 94% of children were meeting or exceeding the expectations; 6% were below the average.



We saw substantial gains in many areas. KHCC will continue to support the early childhood staff in their professional growth within the field of early childhood education and developmental milestones. The early childhood staff will continue to share with the parents developmentally appropriate practices in order to support the infants as a whole. Parents will continue to be engaged in the planning and execution of the daily routines within the classrooms, child care sites and parent's homes.

### **Family Engagement/School Readiness**

Based on trends identified in last year's data the family engagement services implemented new strategies to support children's readiness for school in this program year and they go as followed:

**Family Well Being:** HCI Health Care Initiative will be implemented.

**Parent Child Relationships:** KHCC established a partnership with Riverdale Mental Health to implement the Chances for Children parent child therapy program on site.

**Families as Life Long Educators:** KHCC implemented the Bright Beginnings Personal Best Groups which helps parents develop stress management skills, goal setting and problem solving skills.

### **Community Assessment**

In April of 2013 Kingsbridge Heights conducted a full community assessment. Some of the key findings were that Childcare, Employment, and Education were the top three critical family needs as identified by Early Head Start and Head Start parents surveyed (58.9%, 48.9%, and 45.6%, respectively). ESL and housing were also listed as important family needs. Education, Nutrition and Social Development were the top three critical needs for children within our community and the unemployment rate for the Bronx is 11.6 percent, the third highest unemployment rate of all counties in New York State. Also out of all five boroughs, the Bronx has the highest percent of children under 5 who were below the federal poverty level. The assessment also showed that nearly three-quarters of Head Start eligible children in the Bronx are not being served. This just highlights the critical need for the Early Head Start and Head Start programs in our community. Kingsbridge Heights services a high needs area with limited resources and low income residents.

This year we increased our efforts in finding new community partners and successfully collaborated with the **Hostos Community College Pipeline Program** and have hired graduates from the Pipeline program; the **Prospect Family Support Center** which provide respite care of children for parents that have high levels stress and need; and the **Bronx Lebanon Hospital** for health services.

## PROGRAM DIRECTOR

YENNY TOONE

*Early Childhood Services*



Visit Us Online:

[www.khcc-nyc.org](http://www.khcc-nyc.org)

[www.facebook.com/khcc.nyc](https://www.facebook.com/khcc.nyc)

[www.twitter.com/khcc\\_nyc](https://www.twitter.com/khcc_nyc)



*Early Head Start is a program of the U.S. Department of Health and Human Services.*